



Be An Election Judge

Instructions:
 Registered Voters Only 1. Please complete this form. 2. Once complete, click the "Save" button at the bottom of the page. Registered Voters Only
[Frequently Asked Questions](#)

I wish to serve as an Election Judge in Will County. I understand that I must be a Will County registered voter and reside in Will County in order to serve.
 *These are required fields:

*First Name: _____ *Last Name: _____
 Home Phone: _____ Work Phone: _____
 Email Address: _____
 Address: _____
 *Address: _____
 Address 2: _____
 Apt. Lot, or Unit Number: _____
 *City: _____ *Zipcode: _____

Party Affiliation (please select one): Republican Democrat Best time to contact (please select one):

If you have any questions, please call the Will County Clerk's Office at (815)740-4617 or (815)740-4616.
 Click the SAVE button for further instructions.

Election Judges

- Election Judge Duties
- Qualifications to be an Election Judge
- Are Election Judges Paid?
- What About Party Affiliation?
- Who Selects Election Judges?
- How Will I Know If I Am to Serve?
- Student Election Judge Program

Election Judge Application

Election Judge Application (On-Line Form)

For more information visit our website or e-mail us at electionjudge@willcountyillinois.com

ADDITIONAL ELECTION INFORMATION AVAILABLE ON OUR WEBSITE INCLUDES:

Voter Services

- Why Vote?
- Register to Vote
- Voting Options
- Voting FAQs
- Voter's Bill Of Rights

- What Do I Need To Know Before Going To Vote?
- Where Do I Vote?
- Optical Scan Voting
- Elected Officials

Election Services

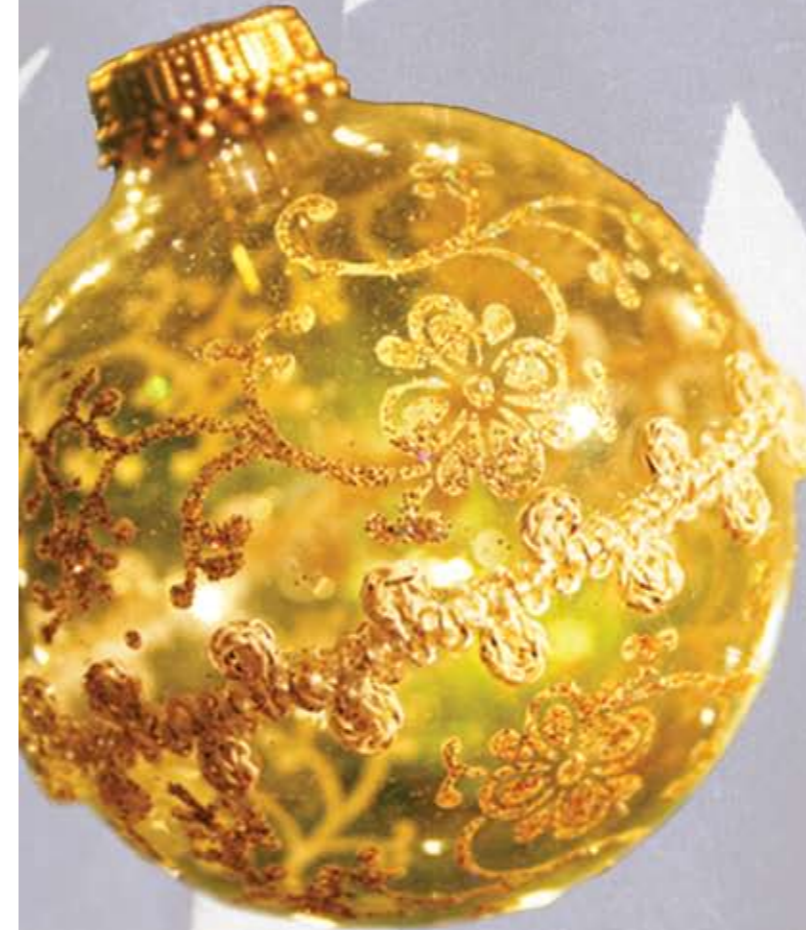
- Candidate Services
- Precinct Committeemen
- Maps & Statistics
- Elections
- Objections to Nominating Petitions
- Election Judges
- Election Results

Election Services

For more information visit our website or e-mail us at elections@willcountyillinois.com

www.TheWillCountyClerk.com

The Right to Vote is a Priceless Gift



This Holiday Season,

take a moment to cherish it and visit www.thewillcountyclerk.com to learn more about the February 2, 2010 General Primary Election



Nancy Schultz Voots
 Will County Clerk



THE WILL COUNTY CLERK'S OFFICE

302 N. Chicago St., Joliet, IL 60432
 (815) 740-4615

We are proud to launch our new website, which has been designed to help you become better informed and connected to all that's happening in the office and with Will County elections. We trust you will find it easy to browse and full of useful information.



www.TheWillCountyClerk.com

Quick Links

- [Election Services](#)
- [Register to Vote](#)
- [Vote by Mail](#)
- [Precinct Lookup](#)
- [Election Results](#)
- [Marriage & Vital Records](#)
- [Be an Election Judge](#)

MANY NEW CONVENIENT FEATURES!

You will find that our new Quick Links at the top of the page make it easier for you to find all the information you need for the February 2, 2010 Election.

- ➔ [Home](#)
- ➔ [Table of Contents](#)
- ➔ [Office Services & Hours](#)
- ➔ [Voter Services](#)
- ➔ [Election Services](#)
- ➔ [Marriage & Vital Records](#)
- ➔ [Public Filings](#)
- ➔ [Tax Extension & Redemption](#)
- ➔ [County Board Records](#)
- ➔ [News, Publications, & Links](#)
- ➔ [Contact Us](#)

Register to Vote

Register to Vote

This page contains voter registration information including links for:

Check Your Voter Registration

Am I registered to vote? (On-Line Inquiry)

Register To Vote

Voter Registration Application (On-Line Mail-In Form)

In order to be eligible to vote in Will County, you must register. The County Clerk's Office processes all voter registration applications for Will County residents. Because the clerk's office is required to verify the accuracy of the voter rolls, we are required by law to mail new Voter Registration Cards every two years to all active voters in Will County.

You can also help us maintain accurate up-to-date records by notifying us via e-mail if you know of an immediate family member who has moved out of Will County or is now deceased.

If you need to replace your Voter Registration Card or would like more information about voter registration services, visit our website or e-mail us at voterregistration@willcountyillinois.com.

Vote by Mail

Absentee Voting

This page contains absentee voting information including links for:

Request an Application and Absentee Ballot

Absentee Voting by Mail (Instructions)

Check the Status of Your Absentee Ballot Request

Absentee Ballot Status Lookup (On-Line Form)

Absentee voting is now available to all registered voters in Will County without specifying a reason. For more information about absentee voting, visit our website or e-mail us at absentee@willcountyillinois.com.

Precinct Lookup

Precinct Lookup

Would you like to know how to easily contact your Elected Officials? Those representing your specific address? Try the Precinct Lookup to find your Elected Officials, Polling Place, Sample Ballot of Candidates & Referenda and much, much more...

Precinct Finder

Address Number* Direction Street Name* Street Type Apt. Num.

 -- --

My Elected Office Holders

Elected Officials
TROY PCT 025

[Federal](#) [State](#) [County](#) [City & Villages](#) [Townships](#) [Special Districts](#)

Federal

Executive http://www.whitehouse.gov/		
President	Barack H. Obama	4 Year Term
Vice President	Joseph R. Biden Jr.	4 Year Term

Polling Place Details

General Primary Election
TROY PCT 025

Name	SHOREWOOD MUNICIPAL BLDG
Address	ONE TOWNE CENTER BLVD., SHOREWOOD, IL 60404 Will County
Directions	(MAIN ENTRANCE) BOARD ROOM



Sample Ballot

ELECTION DATE
COUNTY NAME, STATE
TROY PCT 025 BALLOT STYLE 001

INSTRUCTIONS TO VOTERS: To vote complete the oval to the LEFT of your choice, like this (). To cast a write-in vote, complete the oval to the LEFT of the blank space provided and print the candidate's name in that space. For specific information, refer to the card of instructions posted in the voting booth. If you tear, soil, deface or erroneously mark this ballot, return it to the Election Judge and obtain another.

BEST AUTOMOBILE MANUFACTURER Vote for ONE	BEST VOCAL ARTIST Vote for Not More Than TWO
<input type="radio"/> BMW	<input type="radio"/> FRANK SINATRA
<input type="radio"/> MERCEDES	<input type="radio"/> ELVIS
<input type="radio"/> GENERAL MOTORS	<input type="radio"/> PATSY CLINE
<input type="radio"/> HONDA	<input type="radio"/> JANIS JOPLIN
<input type="radio"/> FERRARI	<input type="radio"/> BUDDY HOLLY
<input type="radio"/> JAGUAR	<input type="radio"/> BARRY WHITE
<input type="radio"/> FORD	<input type="radio"/> BILLIE HOLIDAY
<input type="radio"/> VOLVO	<input type="radio"/> STEVIE RAY VAUGHAN
<input type="radio"/> Write-in	<input type="radio"/> "MAMA" CASS ELLIOT
	<input type="radio"/> Write-in
	<input type="radio"/> Write-in
	BEST ICE-CREAM FLAVOR Vote for ONE
<input type="radio"/>	<input type="radio"/> CHOCOLATE
<input type="radio"/>	<input type="radio"/> STRAWBERRY
<input type="radio"/>	<input type="radio"/> VANILLA
<input type="radio"/>	<input type="radio"/> Write-in