

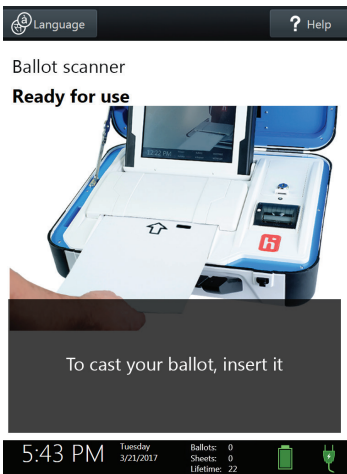
scan and cast your ballot



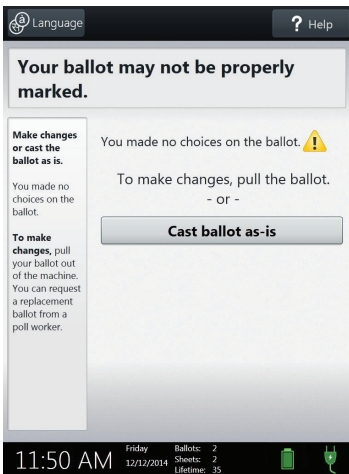
- ▶ The ballot scanner is touch screen operated
- ▶ Follow the instructions on the screen to:
 - Insert your ballot
 - Respond to any on-screen messages
 - Verify your ballot has been cast

1 Insert your ballot into the scanner as shown.

▶ If your ballot contains multiple sheets, insert the first sheet.



2 If there are any problems with your ballot, follow the instructions on the screen.



3 Your ballot is cast when you see the American flag or hear the chime.

▶ If your ballot requires multiple sheets, repeat the process for each sheet.

