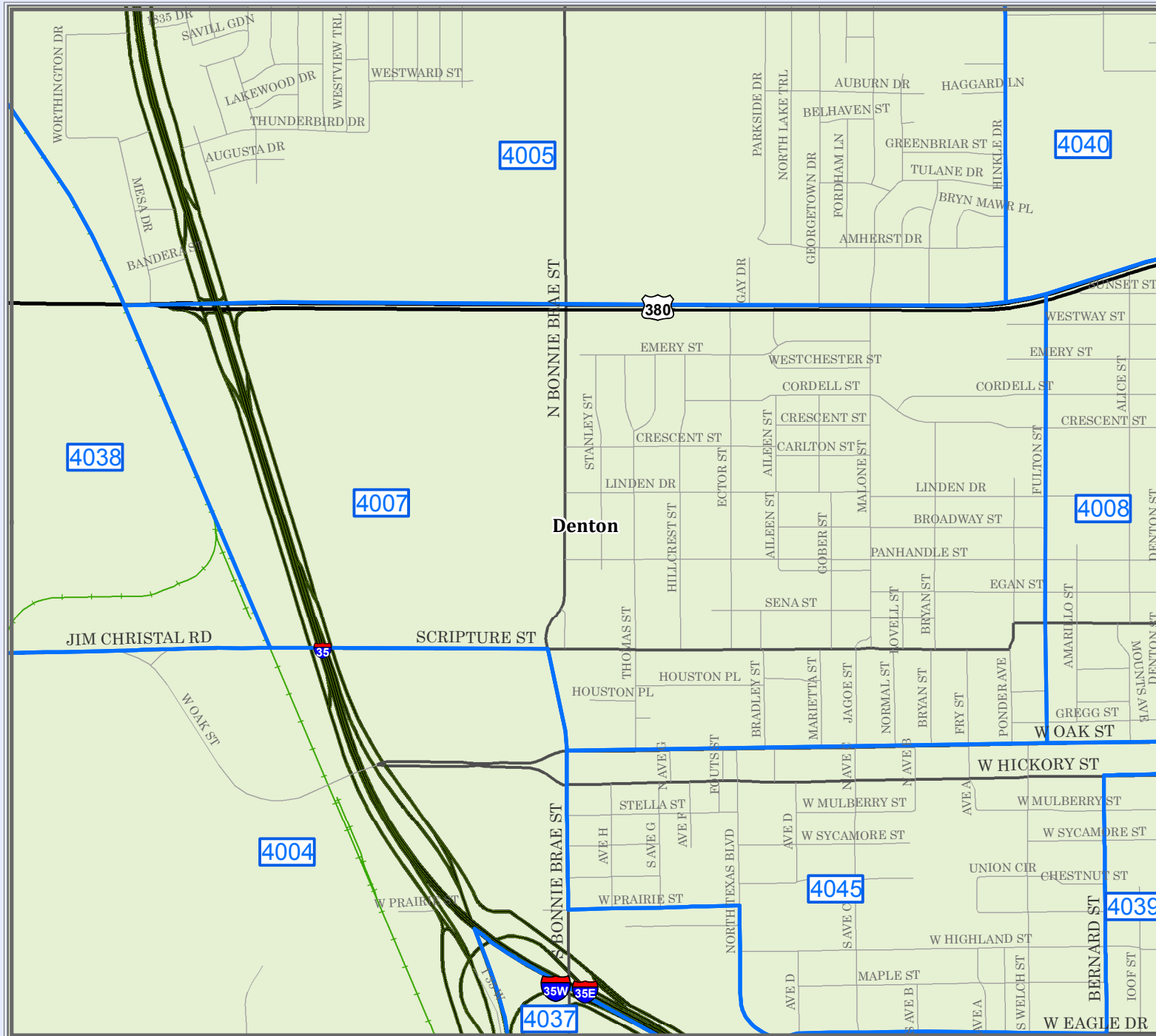


DENTON COUNTY

Voter Precinct 4007



Legend

- INTERSTATE
- U.S. HIGHWAY
- STATE HIGHWAY
- FARM TO MARKET
- MAJOR THOROUGHFARES
- MINOR ROADS
- CEMETERY
- RAILROADS
- AIRPORTS
- STREAMS
- LAKES & PONDS

City Population

Denton > 100,000
Lewisville 60,000 - 100,000
Cedar Rapids 30,000 - 50,000
San Jose 2,000 - 5,000
Precinct - 1,000

1 inch = 0.3 miles
December 07, 2017

This product is for informational purposes and may not have been prepared for or be suitable for legal, engineering, or surveying purposes. Users not registered as on-the-ground surveyors and representing only the approximate relative location of property boundaries.

Denton County does not guarantee the correctness or accuracy of any features on this product and assumes no responsibility for conditions thereon. This product may be revised at any time without notification to any user.

CONTACT INFORMATION
LAND SERVICES DIV. | geodentistry.com
EMAIL: geodentistry@dentoncounty.com

