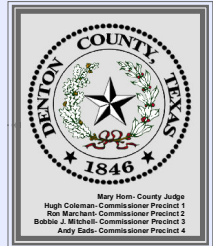
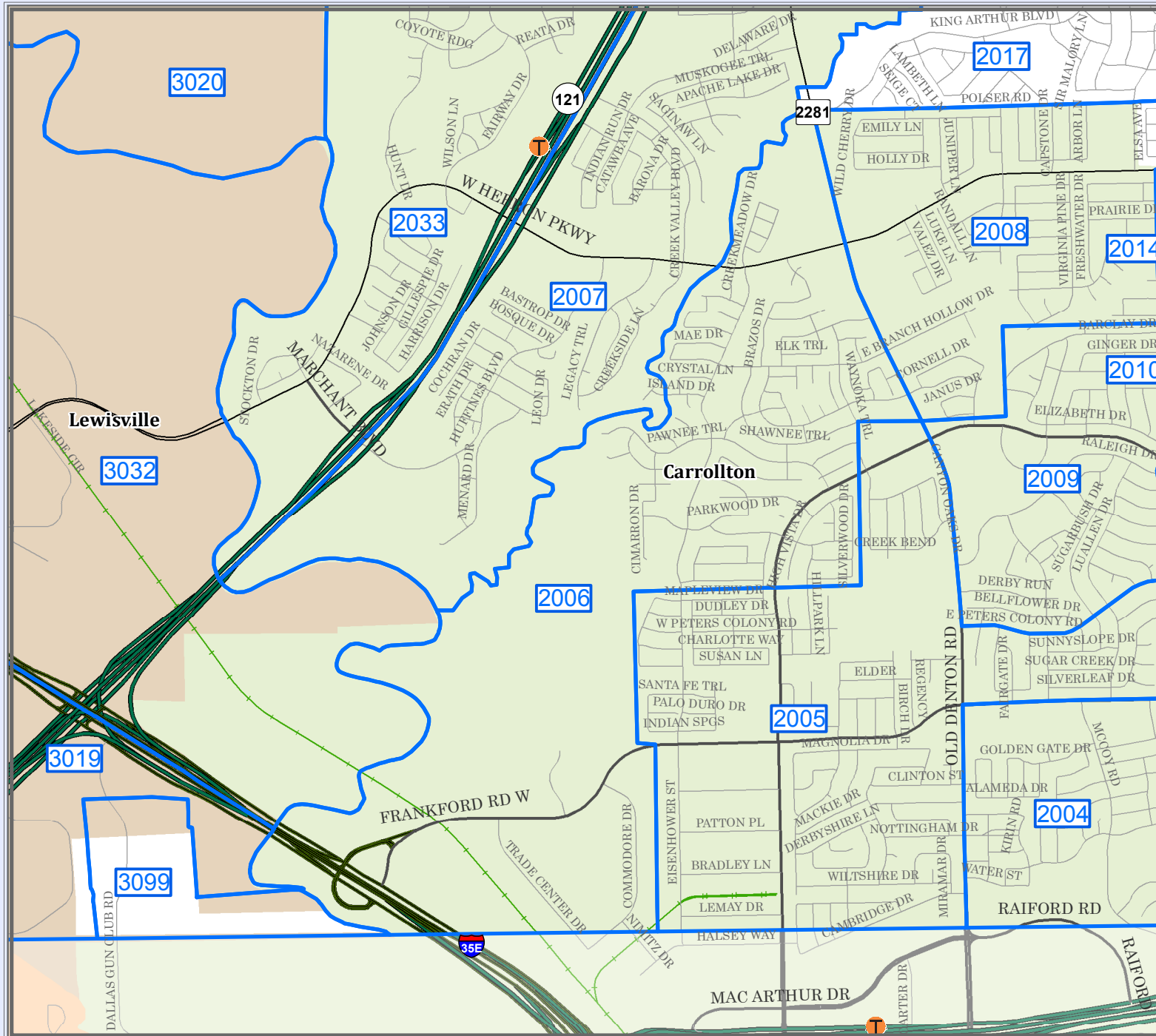


DENTON COUNTY

Voter Precinct 2006



Legend

- INTERSTATE
- U.S. HIGHWAY
- STATE HIGHWAY
- FARM TO MARKET
- MAJOR THOROUGHFARES
- MINOR ROADS
- CEMETERY
- RAILROADS
- AIRPORTS
- STREAMS
- LAKES & PONDS

City Population

Denton > 100,000
 Lewisville 60,000 - 100,000
 Carrollton 30,000 - 60,000
 Saginaw 2,000 - 3,000
 Source: Census 2000, U.S. Census Bureau

1 inch = 0.5 miles
 December 07, 2017

This product is for informational purposes and may not have been prepared for or be suitable for legal, engineering, or surveying purposes. It does not represent an on-the-ground survey and represents only the approximate relative location of property boundaries.

Denton County does not guarantee the correctness or accuracy of any features on this product and assumes no responsibility to correct them. This product may be revised at any time without notification to any user.

CONTACT INFORMATION
 LAND INFORMATION DIVISION
 1000 E. MAIN ST., SUITE 100
 DENTON, TEXAS 76201
 TEL: 940-387-2000
 FAX: 940-387-2001
 WWW.DENTONCOUNTY.COM

